



14 Coleson Hill Road Farnham Surrey

4  3 

This spacious semi detached home has been thoughtfully extended and modernised by the current owners. The property is situated at the end of a cul-de-sac and within 1 mile of excellent schooling, including St Peters Primary and Weydon Secondary. The well presented accommodation is set over three floors and the ground floor features a spacious living room, family room with French doors to the garden, cloakroom/w.c and a fabulous kitchen/dining room.

The kitchen offers a wide range of attractive cupboards and drawers, wood block worktops, integrated dishwasher, space for range and fridge freezer, space for a family size table, french doors to the garden and two skylight windows.

On the first floor is a contemporary family bathroom with both bath and separate shower cubicle, three bedrooms, including the impressive main bedroom with vaulted ceiling, 2 skylight windows, 2 windows overlooking the garden, and an attractive en-suite shower room. On the second floor is

Price : Price Guide £725,000
EPC EER : 74
EPC EER Potential : 83
View : <https://www.keatsfearn.co.uk/sale/surrey/wrecclesham/farnham/residential/semi-detached/8153290>

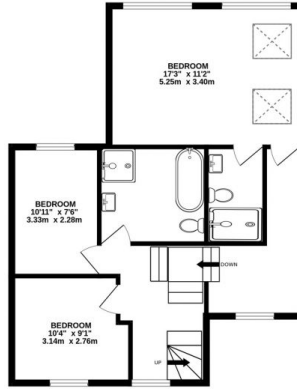
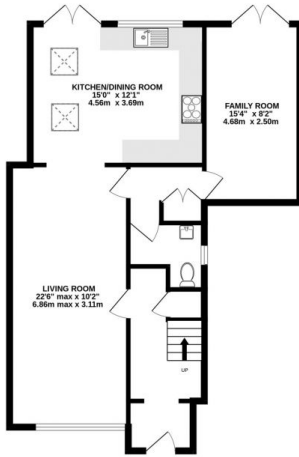


James Fearn
01252 718018

GROUND FLOOR
870 sq.ft. (80.8 sq.m.) approx.

1ST FLOOR
659 sq.ft. (61.3 sq.m.) approx.

2ND FLOOR
239 sq.ft. (22.2 sq.m.) approx.



SQFT INC. OUTBUILDINGS

TOTAL FLOOR AREA : 1768 sq.ft. (164.3 sq.m.) approx.

Whilst every attempt has been made to ensure the accuracy of the floorplan contained here, measurements of doors, windows, rooms and any other items are approximate and no responsibility is taken for any error, omission or mis-statement. This plan is for illustrative purposes only and should be used as such by any prospective purchaser. The services, systems and appliances shown have not been tested and no guarantee as to their operability or efficiency can be given.

Made with Metropix ©2024